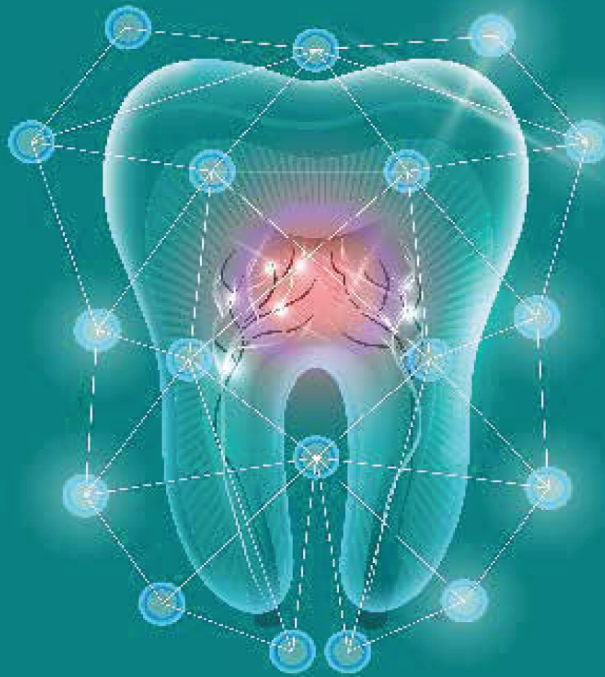




MASTER OF SCIENCE (DENTISTRY)



WHY MUCM FOR YOUR DENTAL EDUCATION?



25 years experience in producing the best talents in the fields of Medicine and Dentistry in Malaysia



An appointed Cochrane Coordinating Centre for Malaysia



Globally experienced team of faculty whose research have enjoyed international acclaim



On-site dental clinic for clinical trial and participation

MQA Number	(N/0911/7/0001) (08/27) (MQA/PA 15722)
Intake (months)	Rolling Admission
Duration	2 years (Full time) 3 years (Part time)

Why Join MUCM for Your Postgraduate Dentistry

For the past 25 years MUCM has produced the best local talents in the fields of Medicine and Dentistry in Malaysia. The students get rigorous training in the field of medicine and dentistry as well as in methodologies of conducting robust research. This is ensured by the faculty of MUCM, who are globally experienced and have international acclaim for their research. The Institution has collaborations nationally and internationally to conduct research and is Cochrane Coordinating centre for Malaysia.

Faculty of Dentistry (FOD) MUCM has adequate resources related to teaching learning activities for undergraduate students. Infrastructure to conduct research, like community-based research as well as laboratory facilities to conduct in- vitro experiments are available. As part of research, to help with activities related to ICT, Computer labs with excellent connectivity, SPSS software are provided.

The central library has a huge repository of both textbooks as well as journals needed for research work. The central library also has access to intra-library exchange of resources and access to various knowledge resources. Online assistance with knowledge resources is available for students who need it.

Faculty of FOD, MUCM are very experienced in their respective fields and have been involved in various institutional and collaborative research activities.

Overview

The course is open for candidates who have completed their under graduation in Dentistry, Medicine and in Allied Health Sciences. Since this programme is by research mode the main assessment method is dissertation evaluation. At the end of the programme students will be able to:

- i. Demonstrate in-depth knowledge of primary and secondary research principles in the field of Dental Sciences.
- ii. Develop originality and independence in critically analysing and synthesising complex information, special concepts, theories, and methods while studying basics of research.
- iii. Conduct rigorous and independent research with minimal supervision.
- iv. Organise with different collaborators to conduct research ethically, professionally.
- v. Effectively communicate the methodology and findings of the research project by using appropriate resources to peers, other health professional and the community.
- vi. Display abilities to use digital devices, communication applications, and networks to access and manage information.
- vii. Perform statistical test to analyse the data and interpret graphical and numerical values.
- viii. Display leadership skills and work autonomously in managing the research activity for the benefit of the profession and the community.
- ix. Demonstrate commitment to lifelong learning and personal development.
- x. Display ethical values and professionalism in conducting the research in dentistry within the confine of the laws and guidelines governing the profession.



Modules

Sem 1	Introduction to Health Research	Major (Core)
	Basic Biostatistics	Major (Core)
	Research Dissertation	Major (Core)
Sem 2,3,4	Research Dissertation	Major (Core)

MUCM Main Research Areas at Faculty of Dentistry (FOD):

- Dental Public Health
- Dental epidemiology
- Oral radiology
- Qualitative research
- Dental implants
- Clinical trials
- Health professions education
- Biomaterials (Dental materials)
- Restorative / Operative dentistry
- Regenerative endodontics
- Management of discoloured teeth
- Aesthetic dentistry, orthodontics
- Herbs in periodontal therapy
- Lasers in periodontal therapy
- Photo biomodulation therapy
- Oral health in marginalized population
- Social behavioural science in dentistry
- Systematic reviews and meta-analysis
- Endodontics + Advanced Endodontics
- Periodontal therapy (non-surgical and surgical)
- Interprofessional education and research
- Medical education and Dental education
- Cariology (Prevention and management of carious and non-carious lesions)
- Oral health (promotion, management system, quality of life, literacy)

ENTRY REQUIREMENTS

MINIMUM ENTRY CRITERIA

- A Bachelor's Degree in Dentistry, Allied Health Sciences or related fields with a minimum CGPA of 2.75 or equivalent, as accepted by the Higher Education Provider (HEP) Senate.
- A Bachelor's Degree in Dentistry, Allied Health Sciences or related fields or equivalent with a minimum CGPA of 2.50 and not meeting CGPA of 2.75, can be accepted subject to rigorous internal assessment.
- A Bachelor's Degree in Dentistry, Allied Health Sciences or related fields or equivalent with minimum CGPA of 2.00 and not meeting CGPA of 2.50, can be accepted subject to a minimum of five years working experience in the relevant field and rigorous internal assessment.
- Candidates without a qualification in the related fields or relevant working experience must undergo appropriate prerequisite courses determined by the Higher Education Provider (HEP) and meet the minimum CGPA based on (i) to (iii).

ENGLISH REQUIREMENT (International Only)

All international students must at least meet one of the following requirements:

IELTS : Band 6.0

TOEFL: 550

MUET : Band 4

Your Investment

Domestic : RM 33,600

International : USD 8,000

Category	Registration	Deposit	Total Tuition Fee	Full-Time, 2 years (4 Semesters)	Part-Time, 3 years (6 Semesters)	Dissertation Fee
				Per Semester*	Per Semester*	
Domestic	RM 500	RM 1,000	RM 33,600	RM 8,400	RM 5,600	RM 1,500
International	USD 150	USD 500	USD 8,000	USD 2,000	USD 1,400 (Semester 1-5) USD 1,000 (Semester 6)	USD 500

* Billing/payment every 6 months

* Extended Semester fee of RM 2,000 per semester (For Domestic) and USD 500 per semester (For International)

* Alumni discount – 10% on inaugural fee

NOTES:

- Additional 10% bursary for alumni and sibling.
 - All fees are subjected to change without further notice.
 - MUCM or its representatives do not charge any additional fee for the service provided to prospective applicant.
- *Every effort has been made to ensure the accuracy of the information provided in the brochure. The institution reserve the rights to alter or delete any of the information included at any time and it shall not be bound by any errors or omissions and cannot accept liability in respect thereof.



MANIPAL
UNIVERSITY COLLEGE
MALAYSIA

Disclaimer: Information in this publication is accurate as of October 2024 and is subject to change. Manipal University College Malaysia strives to ensure accuracy but reserves the right to modify any information without notice. Readers are responsible for verifying information that pertains to them by contacting Manipal University College Malaysia.



Manipal University College Malaysia (MUCM) DKU044(M)
Lot 463-1, Jalan Batu Hampar, Bukit Baru, 75150 Melaka, Malaysia

Follow Us



☎ 06-289 6662 ✉ marketing@manipal.edu.my 🌐 www.manipal.edu.my